



# Integrated Water Resources Plan Purpose and Benefit

Integrated Resources Plan Special Committee

Item 6a

August 17, 2020

# The 1996 IRP Started the Process

- 1996 IRP – collaborative regional planning
- Periodic updates to measure progress and adjust
- The IRP provides a base of information to inform subsequent Board actions to achieve reliability



**1996**



**2004**



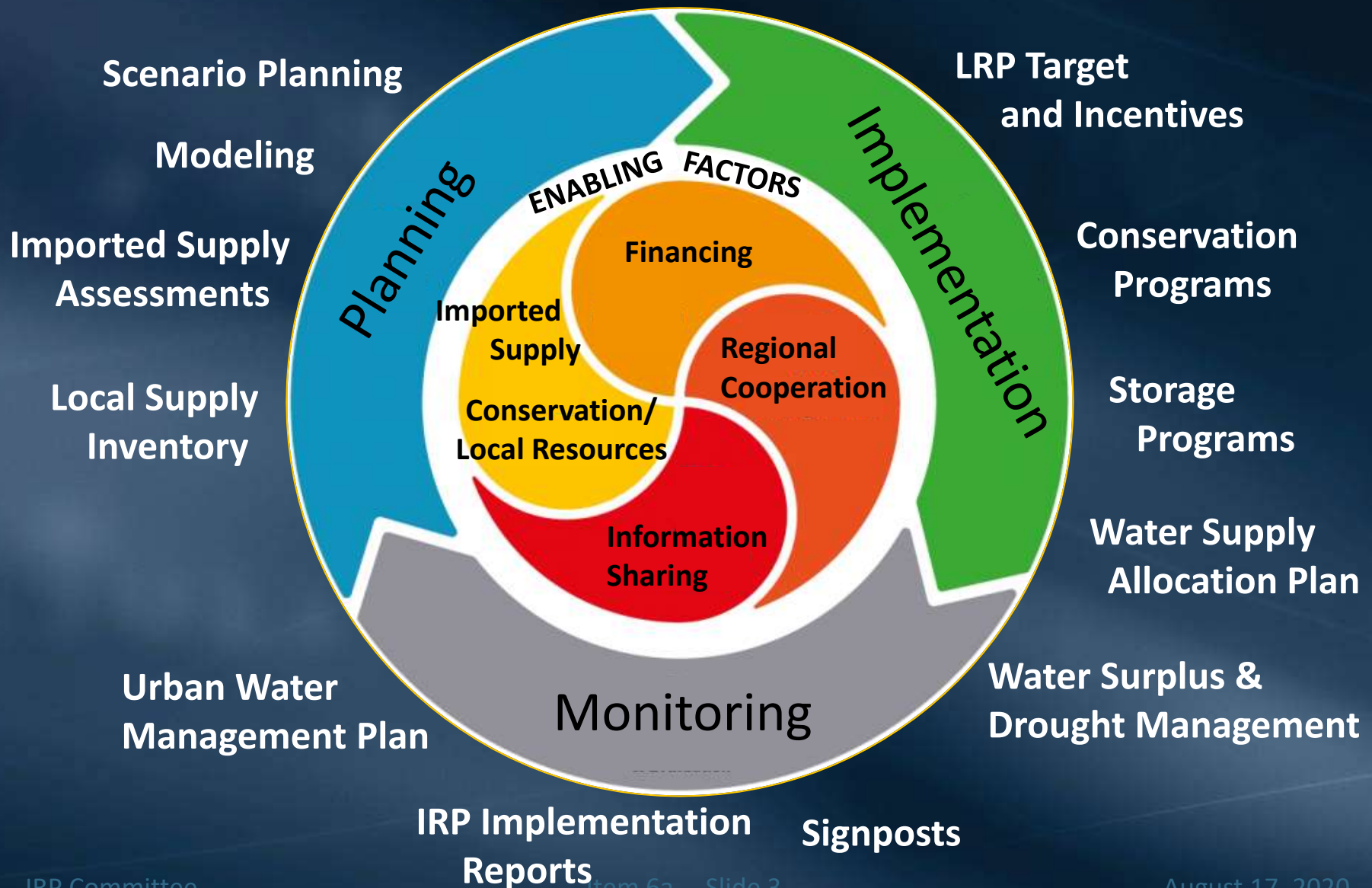
**2010**



**2015**



# The IRP is “A Process and a Plan”



# The IRP Builds on Board Policy

1952  
Laguna  
Declaration

The IRP builds on Board  
policies established  
over the decades

1992  
Revised  
Mission  
Statement  
1996  
Adopted  
IRP

1999  
Strategic Plan  
Policy  
Principles

2011  
Long-Term  
Conservation  
Plan

2015  
Adopted  
IRP

2017  
LRP &  
Conservation  
Policy  
Principles

# The IRP “As a Plan”

- Guideline for investments
  - Does not pre-determine future decisions
- Reference point for
  - Assessing progress
  - Understanding changing needs
  - Determining how to cost-effectively address needs
- Common basis for evaluating a portfolio



# 2015 IRP Adopted Long-Term Targets

Near-term trends indicate improved reliability



Lower retail demands



Higher SWP reliability than anticipated



More CRA supplies available than anticipated

# The IRP Looking Forward

- Metropolitan and Member Agencies face decisions on a future water portfolio
  - Takes a long-range view of future needs
  - Informs Board decision-making under uncertainty
- 2020 IRP will evaluate current options and actions under different future scenarios
  - Identify “signposts” that signal certain actions

