



Investing in Our Water Future\_\_

# Regional Planning for a Changing Climate



## CAMP4W Objectives

- Increase the resiliency and reliability of Southern California's water supplies
- Build greater flexibility into our regional water storage and delivery systems
- Ensure that all member agencies have more equitable access to Metropolitan's supplies
- Pursue cost-sharing partnerships and promote affordable water rates
- Encourage dialogue to build a stronger, water future



## CAMP4W Climate Adaptation Master Plan for Water

Metropolitan's Climate Adaptation Master Plan for Water (CAMP4W) establishes an open public forum to help make decisions that will guide our strategic capital investments in the years and decades ahead, in the face of a changing climate.

## Join the Conversation

For more information about how to get involved in the CAMP4W process, visit [mwdh2o.com/camp4w](http://mwdh2o.com/camp4w)

## Collaborating with Member Agencies

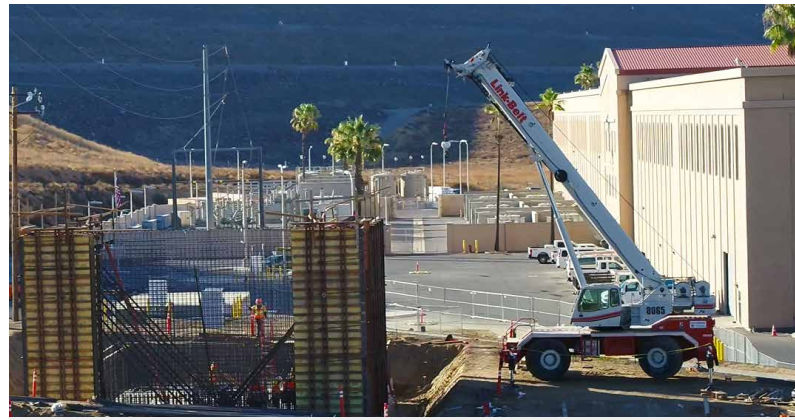
As part of our CAMP4W process, we have established a joint Task Force comprised of Metropolitan board directors, general managers from the district's member agencies and Metropolitan staff. The Task Force is developing tools that Metropolitan's board will use to make strategic investments amid a changing climate with impacts on the region. These tools include:

- A framework for open, transparent decision making that tracks progress;
- Performance targets for infrastructure and water resource management initiatives to achieve a climate-resilient water supply portfolio for Southern California;
- Criteria for evaluating and prioritizing investments; and
- Strategic financing and business model alternatives.

CAMP4W Task Force meetings are open to the public and streamed live on [mwdh2o.com](http://mwdh2o.com) from the Board Meetings and Agendas tab.

# Investing in Regional Climate Resilience

As climate change puts increasing pressure on supplies imported from Northern California and the Colorado River, we need to develop a more flexible and resilient water supply portfolio for Southern California. Our quality of life, environment and economy depend on it. The CAMP4W will evaluate imported water supplies, water efficiency and local water projects through the lens of climate adaptation, sustainability and equity.



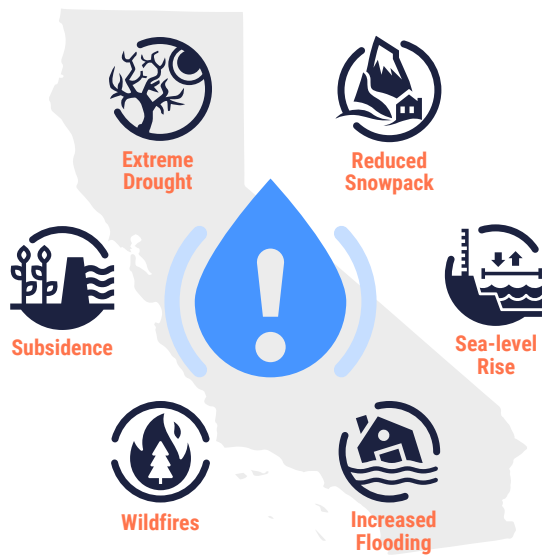
Wadsworth Pumping Facility at Diamond Valley Lake



## Cost Matters

Investments needed to adapt Southern California’s water systems for climate change have significant price tags. To help maintain affordability for member agencies and their customers, Metropolitan is pursuing state and federal funding to support projects that reduce climate and drought impacts, provide cost savings through a regionally coordinated approach and improve water supply reliability, water quality and equity for all member agencies.

## Climate Risks to Southern California’s Water Resources



### About Metropolitan

The Metropolitan Water District of Southern California is a state-established regional cooperative of 26 cities and public water agencies, which collectively serve 19 million people in six counties. Metropolitan imports water from the Colorado River and Northern California to supplement local supplies and supports its members through the development of increased conservation, recycling, storage and other resource management programs.



**BE INFORMED,  
BE INVOLVED**

[www.mwdh2o.com](http://www.mwdh2o.com)



@mwdh2o